



EXAMINATION RESULTS

Queensbury School

Academic Year 2022-2023



education**IMPACT**
Academy Trust

M. Ali

Contents Page

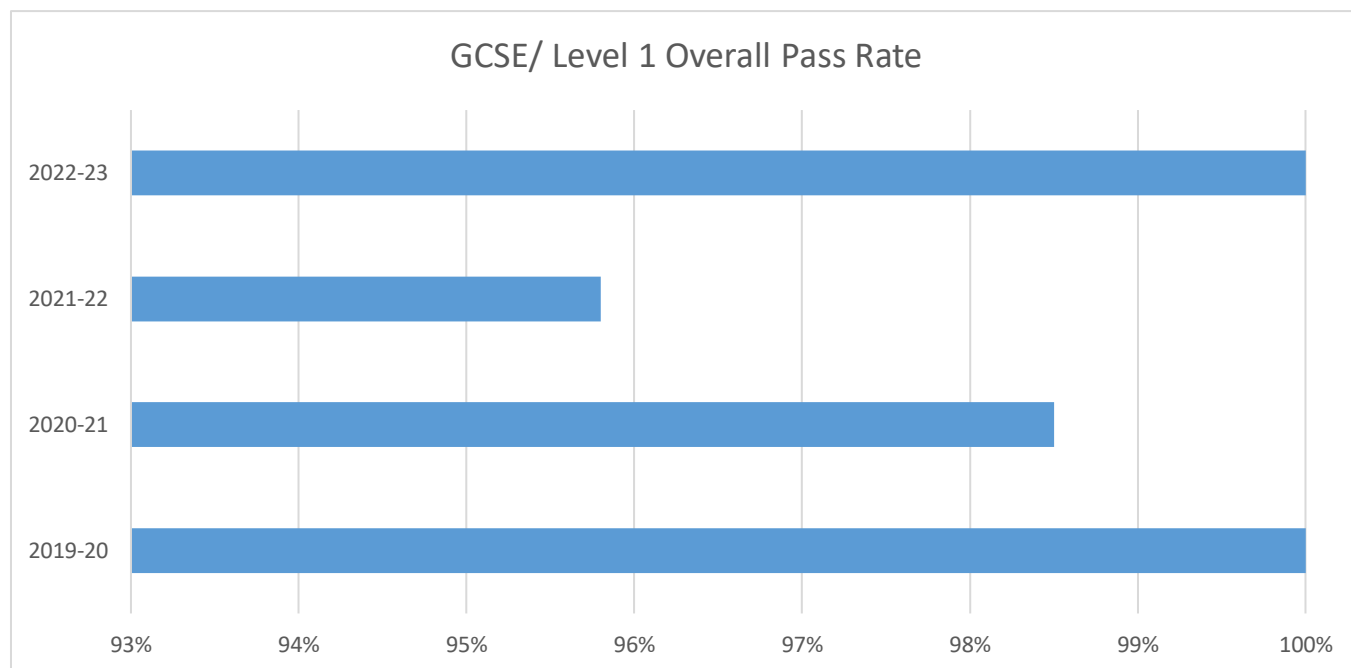
<i>Key Stage 4 Headline Information</i>	2
<i>GCSE Performance against predictions</i>	3
<i>KS4 GCSE/Level 1 Results</i>	6
<i>Entry Level Performance against predictions</i>	9
<i>KS4 Entry Level Results</i>	10
<i>KS4 Pre-Entry Level Results</i>	11
<i>Key Stage 5 GCSE Entries and Key Stage 5 Results</i>	12
<i>Destination Data</i>	14
<i>Summary</i>	15

Key Stage 4

KEY HEADLINE INFORMATION:

This was the last year of GCSE students to be classed as the Covid 19 generation. This year saw a return to grade boundaries as per 2019. Despite the interruptions of Covid and teacher strikes students continued to do well at Queensbury.

The 2023 OVERALL PASS RATE saw every student leaving with at least one Entry level qualification and every student entered for GCSE accreditation leaving with at least one GCSE.



GCSE PERFORMANCE AGAINST PREDICTIONS:

In the 2023 Year 11 cohort of 34 students, 100% students achieved at least one qualification at either Entry Level or GCSE/Level 1. In 2022, 96.3% had achieved at least one qualification at either GCSE/Level 1 or Entry Level.

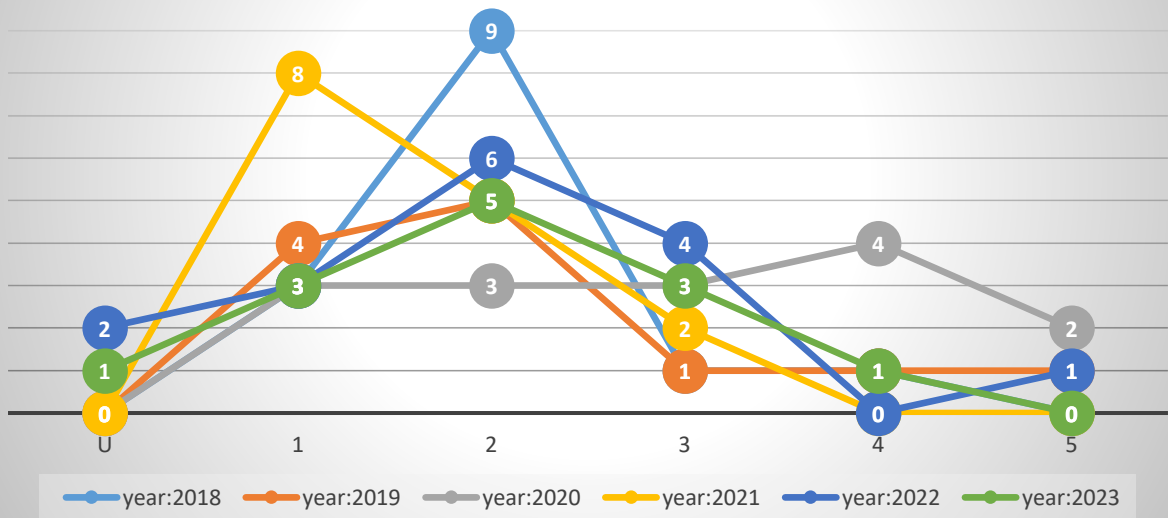
- **23 (67.7%) achieved AT LEAST 1 GCSE/Level 1 qualification** – which is a slight decrease on last year's results compared to 74% last year. However, the 74% represents 20 students.
- **9 students (26.4%) achieved 6 OR MORE GCSE/Level 1 qualifications.**
- **9 students (26.4%) achieved 8 OR MORE GCSE/Level 1 qualifications** – compared to 33.3% (9 students) last year.
- **7 students (20.5%) achieved 10 GCSE/Level 1 qualifications** – compared to 7.4% (2 students) last year.

Although achievement figures overall were slightly lower than last year, this year, a greater number of students achieved 10 GCSE/ Level 1 qualifications.

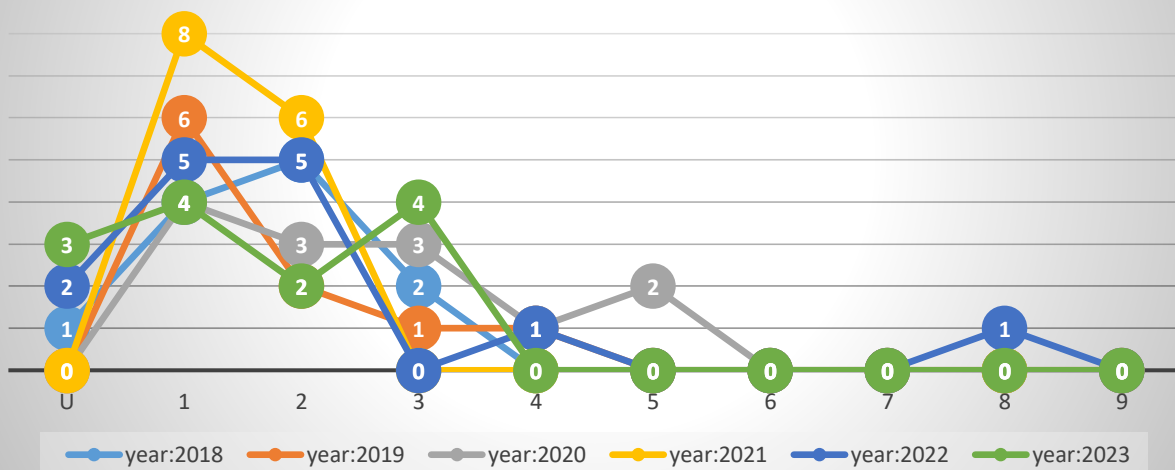
- **30.6% of students this year achieved ABOVE expected in GCSE/Level 1 accreditations.**
- **84.3% of students this year achieved AS expected in GCSE/Level 1 accreditation.**

- **GCSE English Language** – 13 students entered – 12 achieved a grade
- **GCSE English Literature** – 13 students entered – ALL achieved a grade.
- **GCSE Mathematics** – 13 students entered –10 achieved a grade.
- **GCSE Combined Science: TRILOGY** – 6 students entered -4 achieved the double award GCSE. Here the grade boundaries were altered on the day of results to reflect higher boundaries.
- **GCSE Biology/GCSE Chemistry/GCSE Physics** – 7 students entered- all achieved a grade in each of the 3 sciences.
- **GCSE Fine Art** – 10 students entered – ALL achieved a grade.
- **GCSE Religious Studies** – 13 students entered – 11 achieved a grade.
- **GCSE Geography** – 13 students entered – 9 achieved a grade.
- **GCSE 3D Art** – 9 students entered – ALL achieved a grade.
- **ICT Level 1 Certificate** – 13 students entered – ALL achieved
- **Arts Award Bronze**– 4 students entered – ALL achieved

GCSE English Language - Grade comparison from 2018 to 2023



GCSE Maths Grade Comparison from 2018 - 2023



Key Stage 4 GCSE Results 2023

SUBJECT	GRADE											
	9	8	7	6	5	4	3	2	1	U Fail	Number of students entered	Pass Rate
GCSE English Language						1	3	5	3	1	13	92.3%
<i>Comparison Last Year 2022</i>					1		2	6	2	1	12	91.6%
<i>Comparison 2021</i>							2	5	8		15	100%
<i>Comparison 2020</i>					2	3	3	3	3		14	100%
<i>Comparison 2019</i>					1	1	1	5	4		12	100%

GCSE English Literature							1	3	9		13	100%
<i>Comparison Last Year 2022</i>						2	1	3	6		12	100%
<i>Comparison 2021</i>							1	6	8		15	100%
<i>Comparison 2020</i>					4	1	3	2			10	100%
<i>New GCSE - No Comparison Data 2019</i>												

GCSE Mathematics							4	2	4	3	13	83.3%
<i>Comparison Last Year 2022</i>		1				1		4	4	2	12	83.3%
<i>Comparison 2021</i>								6	8		14	100%
<i>Comparison 2020</i>					2	1	3	3	4		13	100%
<i>Comparison 2019</i>						1	1	2	6		10	100%

GCSE Combined Science: Trilogy								2	2	2	6	66.6%
<i>Comparison Last Year 2022</i>							3	12	5		10	100%
<i>Comparison 2021</i>						4	12	11	1		14	100%
<i>Comparison 2020</i>						3	4	5	4		8	100%
<i>New GCSE – No Comparison Data 2019</i>												

GCSE Biology						1	2	3	1		7	100%
<i>Comparison Last Year 2022</i>		1			1						2	100%
<i>No Comparison Data 2021 – Covid</i>												
<i>Comparison 2020</i>					2	2	1				5	100%
<i>New GCSE – No Comparison Data 2019</i>												

GCSE Chemistry							3	3	1		7	100%
<i>Comparison Last Year 2022</i>	1				1						2	100%
<i>No Comparison Data 2021 – Covid</i>												
<i>Comparison 2020</i>					1	2	2				5	100%
<i>New GCSE – No Comparison Data 2019</i>												

GCSE Physics							1	3	3		7	100%
<i>Comparison Last Year 2022</i>		1				1					2	100%
<i>No Comparison Data 2021 – Covid</i>												
<i>Comparison 2020</i>					2	1	2				5	100%
<i>New GCSE – No Comparison Data 2019</i>												

GCSE Fine Art							3	5	2		10	100%
<i>Comparison Last Year 2022</i>							2	6	1		9	100%
<i>Comparison 2021</i>						1	6	3			10	100%
<i>Comparison 2020</i>					1	1	7	2			11	100%
<i>Comparison 2019</i>					1	1	4	1			7	100%

GCSE Religious Studies							1	7	3	2	13	84.6%
<i>Comparison Last Year 2022</i>					1		1	2	6	2	12	83.3%
<i>Comparison 2021</i>							3	5	5	2	15	86.6%
<i>Comparison 2020</i>						3	3	4	3	1	14	93%
<i>New GCSE – No Comparison Data 2019</i>												

GCSE Geography							1	3	5	4	13	69.2%
<i>Comparison 2022</i>			1					4	6	1	12	91.6%
<i>Comparison Last Year 2021</i>							1	3	10		14	100%
<i>New GCSE – No Comparison Data 2020</i>												

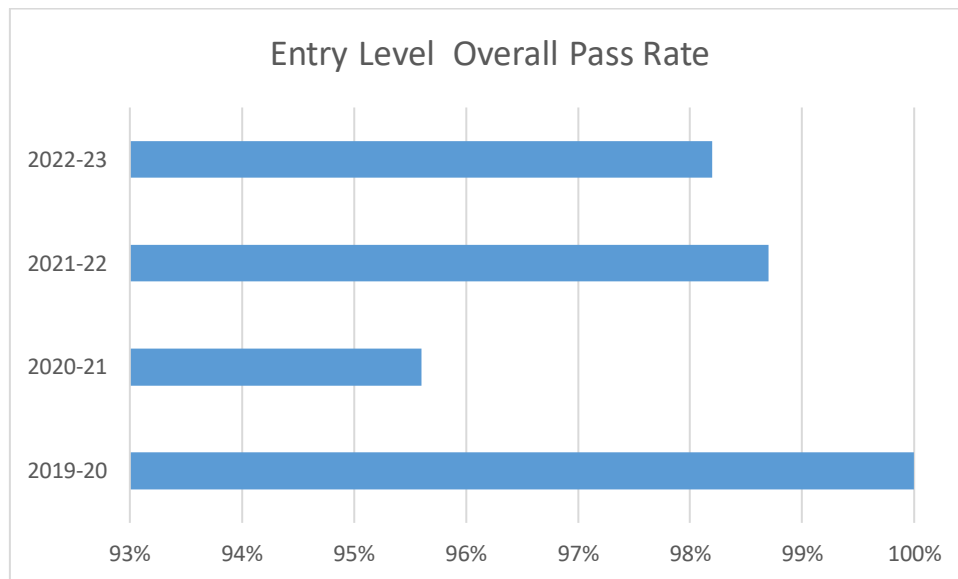
GCSE 3D Design – D&T								2	4	3	9	100%
<i>Comparison Last Year 2022</i>								4	5		9	100%
<i>Comparison 2021</i>							2	9			11	100%
<i>New GCSE – No Comparison Data 2020</i>												

	Distinc-tion *	Distinc-tion	Merit	Pass	U Fail	Number of students entered	Pass Rate
ICT Level 1 Certificate	5	2	5	1		13	100%
<i>Comparison Last Year 2022</i>	4	2	4	2		12	100%
<i>Comparison 2021</i>		1	10	4		15	100%
<i>Comparison 2020</i>	2		5	8		15	100%
<i>Comparison 2019</i>	1	2	6	3		12	100%

	Distinc-tion *	Distinc-tion	Merit	Pass	U Fail	Number of students entered	Pass Rate
Arts Award Bronze				4		4	100%

ENTRY LEVEL PERFORMANCE AGAINST PREDICTIONS:

The 2023 OVERALL PASS RATE for Year 11 ENTRY LEVEL accreditation was marginally lower than 2022 at 98.2% compared to 98.7% in 2022.



- **Entry Level Step Up To English** – 14 students entered – 12 students achieved.
- **Entry Level Mathematics** – 15 students entered – ALL achieved.
- **Entry Level Science** – 14 students entered – ALL achieved.
- **Entry Level P.E.** – 34 students entered – ALL achieved, meaning all students including 4D left with at least one entry level.
- **Entry Level 3 ICT**– 14 students entered – ALL achieved.
- **Arts Award Explore**– 8 students entered – ALL achieved.
- **100% pass** rate achieved in **WJEC Pathways Independent Living** with students receiving awards and unit accreditation.
- **100% pass** rate achieved in **Aim Skills for Living and Work** (food) with students receiving awards and unit accreditation.

Key Stage 4 Entry Level Results 2023

SUBJECT	GRADE					
	ENTRY 3	ENTRY 2	ENTRY 1	U Fail	Number of students entered	Pass Rate
English STEP UP		5	7	2	14	85.6%
<i>Comparison Last Year 2022</i>	9	6	4		18	100%
<i>Comparison 2021</i>	3		8	6	17	64.7%
<i>New Entry Level – No Comparison Data 2020</i>						

Mathematics	3	4	8		15	100%
<i>Comparison Last Year 2022</i>	1	4	5		10	100%
<i>Comparison 2021</i>	5	5	1		11	100%
<i>Comparison 2020</i>	7	4	4		15	100%
<i>Comparison 2019</i>	2	7	9		18	100%

Science		3	11		4	100%
<i>Comparison Last Year 2022</i>		5	4		9	100%
<i>Comparison 2021</i>		2	12		14	100%
<i>Comparison 2020</i>	3	10	2		15	100%
<i>Comparison 2019</i>	3	10	2		15	100%

ICT	14				14	100%
<i>Comparison Last Year 2022</i>	9				9	100%
<i>Comparison 2021</i>	11 Certificate 4 Awards				15	100%
<i>Comparison 2020</i>	13				13	100%
<i>Comparison 2019</i>	9		9		18	100%

PE	7	17	10		34	100%
<i>Comparison Last Year 2022</i>		15	9	1	25	96%
<i>Comparison 2021</i>	6	16	10		32	100%
<i>Comparison 2020</i>	6	18	13		37	100%
<i>Comparison 2019</i>	5	10	13	1	29	97%

Food		9			9	100%
<i>Comparison Last Year 2021</i>	8	7	2		17	100%
<i>Comparison 2020</i>		15	7		22	100%
<i>Comparison 2019</i>		13	5		18	100%

Living Independently		5			5	100%
<i>Comparison Last Year 2022</i>		5			5	100%
<i>Comparison 2021</i>	2 Award	9 Award			11	100%
<i>Comparison 2020</i>	2 Award	7 Certificate 6 Award			15	100%

Comparison 2019	1	2 Certificate 6 Award			9	100%
Arts Award EXPLORE	8				8	100%
Comparison Last Year 2022	7				7	100%
Comparison 2021	5				5	100%
Comparison 2020	13				13	100%
Comparison 2019	11				11	100%

PRE-ENTRY LEVEL PERFORMANCE:

The 2023 OVERALL PASS RATE for PRE-ENTRY LEVEL accreditation was 100%.

Pre-Entry Level accreditation is offered across all subjects to students on our Discovery Pathway. This enables students who are unable to achieve an Entry Level qualification the opportunity to still gain certificates recognising their abilities and achievements.

Key Stage 5

SIXTH FORM GCSE ENTRIES:

GCSE RESITS & ENTRY/LEVEL 1 ACCREDITATION:

This year, eight students who were entered for the GCSE English Language and 11 students for GCSE Mathematics examinations, as per DfE requirements. Some students improved upon their previous Year 11 or Resit grades, two achieved the required Grade 4. (EM in English Language & 11 in Mathematics).

Key Stage 5 GCSE Entries 2023

SUBJECT	GRADE										Number of students entered	Pass Rate
	9	8	7	6	5	4	3	2	1	U Fail		
GCSE English Language						1	5	1		1	8	87.5%
<i>Comparison Last Year 2022</i>							2		1	1	4	75%
<i>Comparison 2021</i>							1	3	1		5	100%
<i>Comparison 2020</i>						1					1	100%
<i>Comparison 2019</i>							1		1		2	100%
GCSE Mathematics						1		5	3	2	11	81.8%
<i>Comparison Last Year 2022</i>								1	2		3	100%
<i>Comparison 2021</i>							1				1	100%
<i>No Comparison Data 2020</i>												

Key Stage 5 Results 2023

Entry Level Certificate				
Subject	Grade			
	Entry 3	Entry 2	Entry 1	Fail

Step Up English	3		4	9
Mathematics		4	6	3

Subject	Grade				
	Level 1	Entry 3	Entry 2	Entry 1	Fail
Prince's Trust Personal Development & Employability Award	4				
Arts Award Bronze	20				

Open College Network West Midlands Region					
Subject	Grade				
	Level 1	Entry 3	Entry 2	Entry 1	
Employability & Development Skills					
Award	7	2			

Skills for Living & Work					
Certificate	24	2			
Award	1	2			
Unit	8	8	7	1	

- **GCSE English Language** – 8 students entered – 7 achieved a grade.
- **GCSE Mathematics** – 11 students entered – 9 achieved a grade.
- **Arts Award Bronze**– 4 students entered – ALL achieved.
- **Princes Trust Award** – 4 students entered – ALL achieved.
- **Step Up English**– 16 students entered – 7 achieved a grade.
- **Entry Level Mathematics**– 13 students entered – 10 achieved a grade.

100% pass rate was achieved in entries for **Aim** qualifications in Employability, Skills for Living and Work and Food units.

Students also received various AQA Unit Awards at Level 1, Entry Level and Pre-Entry Level.

Destination Data

DESTINATION DATA/GATSBY BENCHMARKS:

Students are now more prepared for the next stage of their education or adult lives. The quality of work is improving and students' work is of a good quality.

Our careers Lead has met with every student leaving at the end of the year to ensure their destination is suitable and the necessary paperwork is completed through providing support to parents and families.

DESTINATION	YEAR ON YEAR COMPARISON						
	2016-17	2017-18	2018-19	2019-20	2020-21	2021-22	2022-23*
Not in Education or Training – NEET	7%	3%	11%	2%	0%	2.5%	0%
Further Education – FE	93%	97%	89%	96%	100%	97.5%	100%
Paid/Unpaid Work – Volunteering or Employment	0%	0%	0%	2%	0%	0%	0%

* Subject to final confirmation from BCC SENAR and parent families over the next few weeks.

Break down of 2022-2023 Data:

Year 11 students – 34 leavers, 5 placed in FE (Further Education), with 29 remaining in 6th Form, 0% NEET.

Post 16 students – 23 leavers, 23 placed in FE (Further Education) 0% NEET.

Combined total – 57 leavers, 28 placed in FE (Further Education) 0% NEET.

Summary

In the 2023 Year 11 cohort of 34 students, 100% students achieved at least one qualification at either Entry Level or GCSE/Level 1.

- *7 students (20.5%) achieved 10 GCSE/Level 1 qualifications – compared to 7.4% (2 students) last year.*

Although achievement figures overall were slightly lower than last year, this year, a greater number of students achieved 10 GCSE/Level 1 qualifications.

- *30.6% of students this year achieved ABOVE expected in GCSE/Level 1 accreditations.*
- *84.3% of students this year achieved AS expected in GCSE/Level 1 accreditation.*

The 2023 OVERALL PASS RATE for Year 11 ENTRY LEVEL accreditation was marginally lower than 2022 at 98.2% compared to 98.7% in 2022. The 2023 OVERALL PASS RATE for PRE-ENTRY LEVEL accreditation was 100%.

This year, eight students who were entered for the GCSE English Language and 11 students for GCSE Mathematics examinations, as per DfE requirements. Some students improved upon their previous Year 11 or Resit grades, two achieved the required Grade 4.

Combined total of leavers in 2023 was 57 leavers, of which 34 were of which 34 were Year 11 students and 23 from Post 16. 28 of the 57 placed in FE and remainder went onto 6th Form (new Horizons) with 0% NEET.