



21<sup>st</sup> June 2021

Dear Parents / Carers,

## **Re: Building works –New build**

Sometime ago, I informed you of our success in gaining **3.5 million pounds** to improve the school building and learning facilities. Having arrived over two years ago, I know this has been long overdue for the school, students and staff. **1.75 million pounds** of this is to be used to improve the building in decommissioning our very old mobile classrooms and developing a **new build extension** onto the existing main school. This build will encompass: *7x new classrooms, 3x calm rooms, therapy rooms, mentor space, meeting space, alongside new toilet facilities, storage and offices.*

Currently we have submitted planning to the local authority and awaiting the final decision. You can view relevant details:

- <https://eplanning.birmingham.gov.uk/Northgate/PlanningExplorer/ApplicationSearch.aspx>
- Planning Application Number: **2021/03975/PA**

Enabling works are due to start in August 2021, to ensure the site is safe and cordoned off appropriately. Construction is planned to commence in the **new academic year**. We have included a draft drawing of the potential development and school grounds.

**Ridge Property and Construction Consultants** will be managing the build, and any potential contractors on site. We will endeavour to limit the disruption to our learning throughout the project and Ridge are fully aware of **our students SEND needs**. Whilst this will cause some disruption for **12 months**, it will give our students a building they deserve!

If you have any questions, please do not hesitate to contact us on [enquiry@queensbury.eiat.org.uk](mailto:enquiry@queensbury.eiat.org.uk)

Yours sincerely

**Chris Wilson**

Executive Head teacher

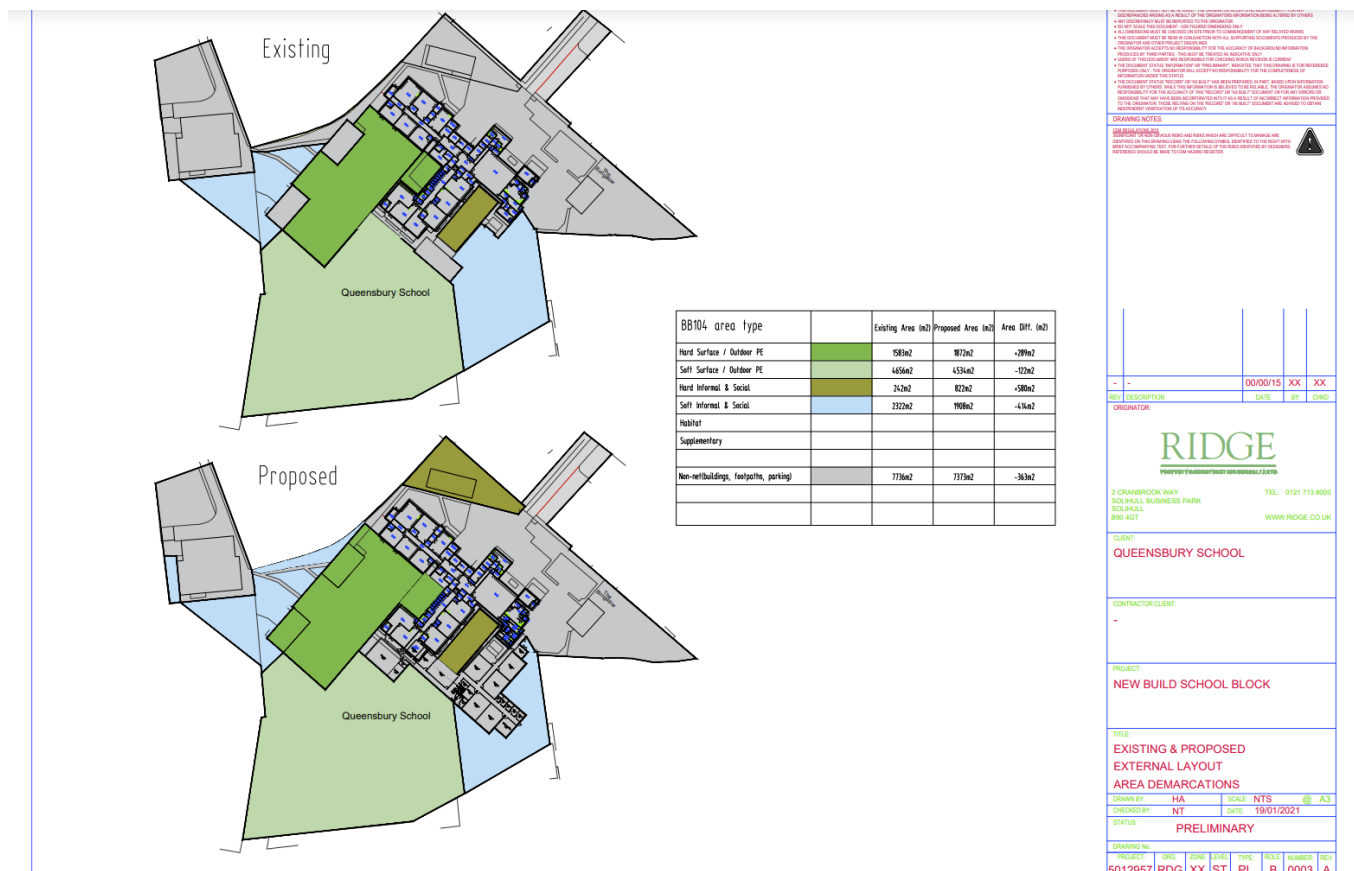


# Queensbury School

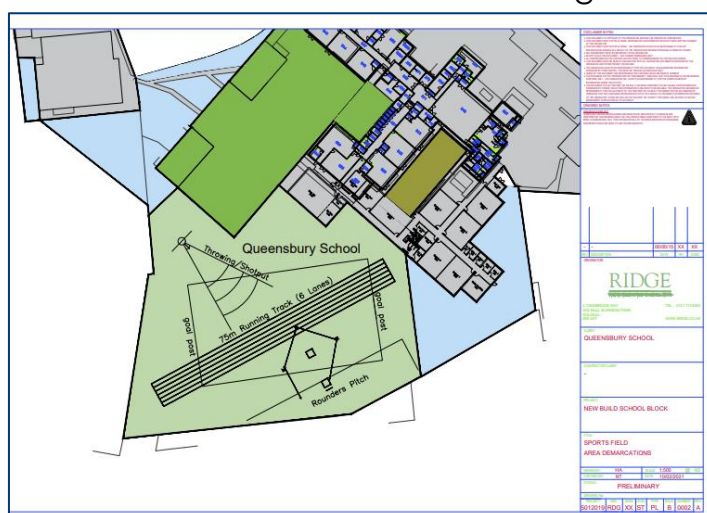
Unleash your limitless potential



Executive Head Teacher **Mr Chris Wilson BSc / PGCE / NPQH / MA**



We have worked hard with **Ridge Construction**, **Energy providers** and **Sport England** in the planning process to ensure we retain the integrity of our sports facilities and playing fields and be considerate to our residents and neighbours of the school.



**Address** Wood End Road, Erdington.  
Birmingham.B24 8BL  
**Phone** 0121 373 5731  
**E-mail** enquiry@queensbury.eiat.org.uk  
**Web** www.queensburysch.com



**INVESTORS IN PEOPLE** Silver

**EducationIMPACT**  
Academy Trust  
www.educationimpact.org.uk



# Queensbury School

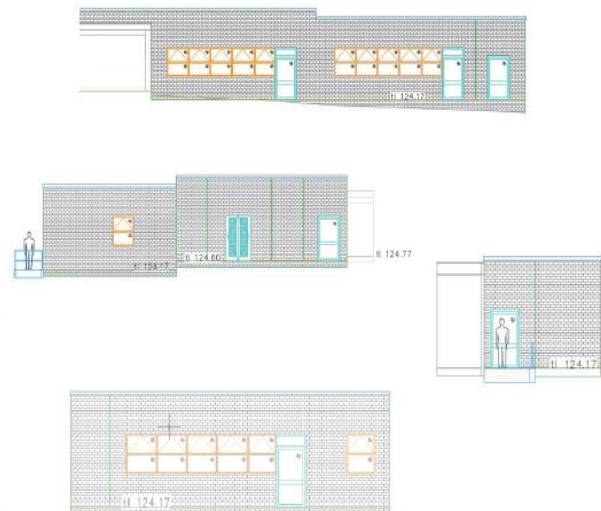
*Unleash your limitless potential*



Executive Head Teacher **Mr Chris Wilson** BSc / PGCE / NPQH / MA

## QUEENSBURY SCHOOL - NEW BUILD EXTENSION

RIDGE



**Address** Wood End Road, Erdington.

Birmingham.B24 8BL

**Phone** 0121 373 5731

**E-mail** [enquiry@queensbury.eiat.org.uk](mailto:enquiry@queensbury.eiat.org.uk)

**Web** [www.queensburysch.com](http://www.queensburysch.com)



**EducationIMPACT**  
Academy Trust

[www.educationimpact.org.uk](http://www.educationimpact.org.uk)